



雙語週報

205 期



官方網站



線上訂購

定價 40 元

發行人：吳菀庭 出刊日 2022 年 5 月 13 日 訂報專線 (02) 2649-7111

COFFEE,
TEA OR CONVERSATION?
咖啡餐語

英聽教學

Cafés are for more than just coffee.

光臨咖啡館，不單是享用一杯咖啡的香醇。

咖啡一杯話盡天下事

苦盡甘來有味香伴



英文 / Leila Luo 圖 / 123RF



Cafés date back to the 16th century Middle East, where people met to exchange ideas over a cup of coffee. Cafés continued to serve as nurseries for culture, literature and art. Les Deux Magots in Paris has attracted great literary and artistic minds, such as Ernest Hemmingway and Pablo Picasso, since 1812. In Taiwan, the café Astoria has been a home to creatives since 1949.

追溯咖啡館 (Café) 的歷史，可從 16 世紀的中東地區說起。當時人們匯聚於此，一面享用咖啡、一面進行思想交流。在其發展過程中，咖啡館始終作為文化、文學與藝術的搖籃。自 1812 年以降，著名的巴黎雙叟咖啡館吸引了無數偉大的文學家與藝術家，歐內斯特·海明威和巴勃羅·畢卡索都曾座上賓；1949 年自上海遷移至臺灣重新開幕的明星咖啡館，也一直是創作者之家。

Nowadays, cafés might be inside a convenience or grocery store. Some cafés have self-service laundry machines. Even the word 'café' has evolved to mean a regular event where people come together to support each other around a topic. Held in different locations around the world, "climate cafés" are gatherings for people to casually discuss climate change.

如今，咖啡館還能附設於超市和便利商店，甚至有些咖啡館更結合了自助洗衣的設備。咖啡廳的詞義得到擴展，進化為人們可因某項議題聚在一起，互相支持、打氣的定期活動，例如在世界各地舉辦的氣候咖啡館，就是供人們隨意討論氣候變遷的聚會。



exchange (v/n.) 交換

nursery (n.) 苗圃

laundry (n.) 洗衣店

location (n.) 位置

discuss (v.) 討論

哈伯捕捉再刷新紀錄

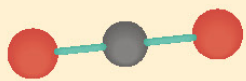
百億光年星辰 剎那化永恆

英文 / Andrew Edmunds 圖 / 123RF

Astronomers recently discovered the most distant star to date. Nicknamed “Earendel”, which means “morning star” in Old English, the giant star formed nearly 13 billion years ago. Earendel was about 50 times the mass of our Sun. Researchers estimate it went supernova several million years after it formed. The fact that Earendel's light was spotted through the Hubble Space Telescope during this brief period of time makes the discovery that much more special.

近日，天文學家發現迄今距離地球最遙遠的恆星。發現者將該恆星暱稱為「埃蘭迪爾 (Earendel)」，取自古英語「晨星」之意。這顆約形成於 130 億年前的巨星，質量約為太陽的 50 倍大。研究團隊推斷它於誕生後的數百萬年內，已在超新星爆炸後消亡。相較於宇宙之浩瀚，其壽命如此短暫，卻能被哈伯太空望遠鏡捕捉到它的光芒，更顯意義非凡。

CO2 啟動獵血行動



蚊子見紅就衝 當心滿頭包

英文 / Andrew Edmunds 圖 / 123RF

New research shows that some mosquitoes are especially attracted to the color red. When mosquitoes search for their next meal, their first step is to find CO2. Now we know that after detecting CO2, they fly towards certain colors, like red, orange or light blue.

最新的研究顯示，部分種類的蚊子特別容易被紅色所吸引。蚊子發起狩獵的第一步，通常從偵測到人類呼出的二氧化碳開始。在二氧化碳啟動狩獵機制後，牠們便會朝著紅、橘和青等特定顏色飛去。



distant (a.) 遙遠的

mass (n.) 質量

period (n.) 一段時間

especially (adv.) 尤其

certain (a.) 肯定的

咖啡飄香匯集群力 改變世界從此出發

英文 / Leila Luo 圖 / 123RF



Besides being a meeting location or an event, cafés can also serve as a reason for people to get together to improve the world around them. The Tucson Repair Café is a monthly event that occurs at various locations around Tucson, Arizona. Since autumn 2021, the goal of the café has been to help locals take a step toward zero-waste living, by showing them how to repair their broken items instead of throwing them away.

除了是聚會地點、活動場地，咖啡館也可成為人們聚集群體力量、改善世界的出發點。每月一次，於亞利桑那州圖森市內不同地點，舉辦的圖森維修咖啡活動，自 2021 年秋季開始，即為當地居民示範，如何維修故障、損壞的物品，向「零浪費生活」邁進，而非丟棄。

“When [people] hear ‘climate change,’ hear ‘zero-waste living,’ they say ‘that’s a great idea,’ but they have no idea how to approach it,” said co-founder Stephen Menke. The Repair Café was founded to do exactly that by demonstrating practical ways that a person can fight climate change in their daily life.

「聽到『氣候變遷』和『零浪費生活』的概念，人們都深感認同，卻又不知從何做起。」聯合創始人史蒂芬・門克表示。而這正是維修咖啡的創立精神。透過實際的操作演示，讓人們在日常生活中也能對抗氣候變遷。



repair (v/n.) 修理 various (a.) 各種不同的 local (n.) 當地居民 approach (v.) 接近 demonstrate (v.) 示範操作、演示

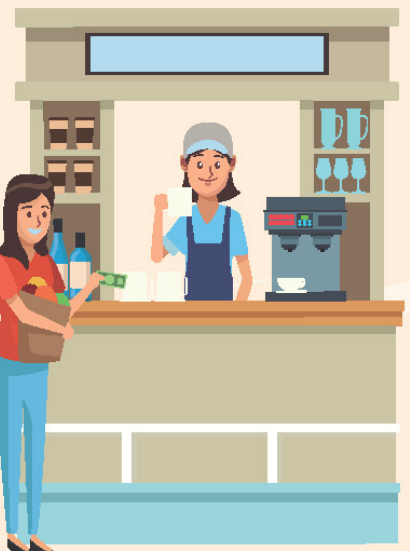
Arisa Okumura once gave up on working at a café because she speaks with a stutter. However, during her stay in Australia, she had a chance to serve customers at a café friendly to people with disabilities. That's why she decided to open her own pop-up café event in Tokyo where people with stutters could have the same opportunity she had.



深受口吃的困擾，奧村安莉莎也曾一度放棄在咖啡館中的工作。所幸她旅居澳洲時期，在一間對身障者友好的咖啡館擔任服務顧客的工作。這樣的經歷啟發她返回東京創立快閃咖啡館活動。奧村安莉莎雇用了同樣備受口吃所苦的人，讓他們也能獲得重建信心的相同機會。

In English, the name of Okumura's pop-up meant “a café where it takes time to order”. Patience is the best tool to use with someone who stutters. To help customers understand this, one server wore a mask that read, “Please bear with me. I like talking.” Servers also told customers, “Please wait until I finish speaking without interrupting or guessing what I’m going to say.”

店名為「注文に時間がかかるカフェ」的奧村快閃咖啡館，意為「點餐請久候咖啡館」。與口吃者溝通，「耐心」是最佳的工具。為了幫助客人理解口吃者，服務生會戴寫著「請多包涵，我愛說話。」的口罩。服務生也會告知顧客：「請不要打斷我或猜測我的意思，拜託您等我把話全部說完。」



1. Which word means about the same as exchange as it was used on page two?
 - a. to put on different clothes
 - b. to turn into something different
 - c. to return a product to a store for a new thing
 - d. to give something and receive something in return
2. How did astronomers discover the new distant star?
 - a. by studying old English books
 - b. by waiting for the right date
 - c. by using a long tube with mirrors and lenses
 - d. by looking for stars in the morning
3. How do mosquitoes find blood to consume?
 - a. by noticing the presence of certain gases
 - b. by attracting their meals to them
 - c. by exhaling on people or animals
 - d. by listening for people talking
4. Which word refers to “what can or should be done in a situation”?
 - a. approach
 - b. climate
 - c. improvement
 - d. practical
5. What did Arisa Okumura and her servers hope their customers would learn from the pop-up cafe event?
 - a. the ability to wait without becoming annoyed or upset
 - b. how to open a business in Australia
 - c. the way to make their special coffee
 - d. why some people have a stutter
6. Demonstrate is to show as ____.
 - a. attract is to support
 - b. casual is to serious
 - c. distant is to convenient
 - d. location is to place

Cloze Test A

Manta rays ____ be found in tropical and subtropical oceans. They have ____ largest brain to body size ratio of all known species of fish. Their long tails can be dangerous, ____ they aren't aggressive animals.

Cloze Test B

Stuttering or stammering is a problem some people have when ____ speak. The person knows what they want ____ say but, the flow of their speech isn't smooth. They might repeat sounds, parts of words, ____ have trouble starting to speak.

1.d 2.c 3.a 4.d 5.a 6.d

1. exchange(v. 交換)，可用於實質物品的交換，也可描述抽象想法的交流。在第 2 版，此字用法為後者。答案為 (d)。

2. 參閱第 3 版第 1 則報導，哈伯太空望遠鏡捕捉到恆星的光芒，換句話說，天文學家是透過哈伯望遠鏡觀測太空，才發現這顆恆星。太空望遠鏡是一個 (c) 內置反射鏡與透鏡的長管狀物品。

3. 第 3 版第 2 則報導提到，蚊子感受到二氧化碳而啟動牠的狩獵行為，而牠的飛行方向、落腳地點則取決於顏色。

4. (d)practical(a. 實際的、實做的)，維修咖啡館透過實際操作，讓人們了解如何在日常生活中實踐零浪費生活。其他選項，(a)v. 靠近、(b)n. 氣候、(c)n. 改善。

5. 第 5 版文章指出，與口吃者溝通，「耐心」是最佳工具。「點餐請久候咖啡館」，以店名、口罩上的短語及服務生口頭的說明，幫助顧客更了解言語障礙者。

6. 觀察詞彙關係，demonstrate(v. 演示、顯示)與 show(v. 顯示、展示)為近義詞，恰如 (d)location(n. 場所、位置)與 place(n. 地點、地方)。

Cloze Test A

1.can 2.the 3.but

棲息在熱帶和亞熱帶海域，俗稱魔鬼魚的鬼蝠魟，尾長帶毒，卻不是生性兇惡的動物。牠們是目前已知魚類中，大腦占整體比例最高的物種。

Cloze Test B

1.they 2.to 3.or

口吃，或稱結巴，是一種言語障礙。患者明知道自己想說什麼，卻無法流暢地表達。他們可能會重複發出同個聲音、部分單詞，甚或是難以開口言語。



精誠所至

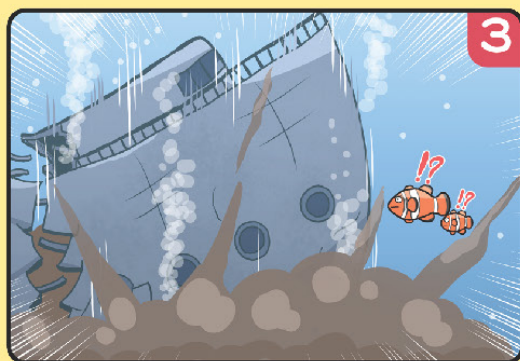
腳本 / Leila Luo 漫畫 / 瀚昇



我們到了沒啊？
再一會兒就到……



只要繼續游，
我保證很快就能找到新家……



你看，只要繼續向前游就有好事發生！

The Rest is History 美海軍親葬除役航母

戰爭機器進化為海生之家

英文 / Andrew Edmunds 圖 / 123RF

On May 17, 2006, a team of Navy personnel sent the USS Oriskany to the bottom of the sea to serve as an artificial reef. Today, its hull is filled with marine life, including sharks, octopuses, and manta rays. The “Mighty O,” as it was also known, earned battle stars in both the Korean and Vietnam Wars.

2006 年 5 月 17 日，美國海軍擊沉奧里斯卡尼號航空母艦，使其成為海底的人工魚礁。被暱稱為「無敵 O」的它，曾活躍於朝鮮戰爭與越南戰爭。現在，它已成為鯊魚、章魚、鬼蝠魟等海洋生物的棲息地。